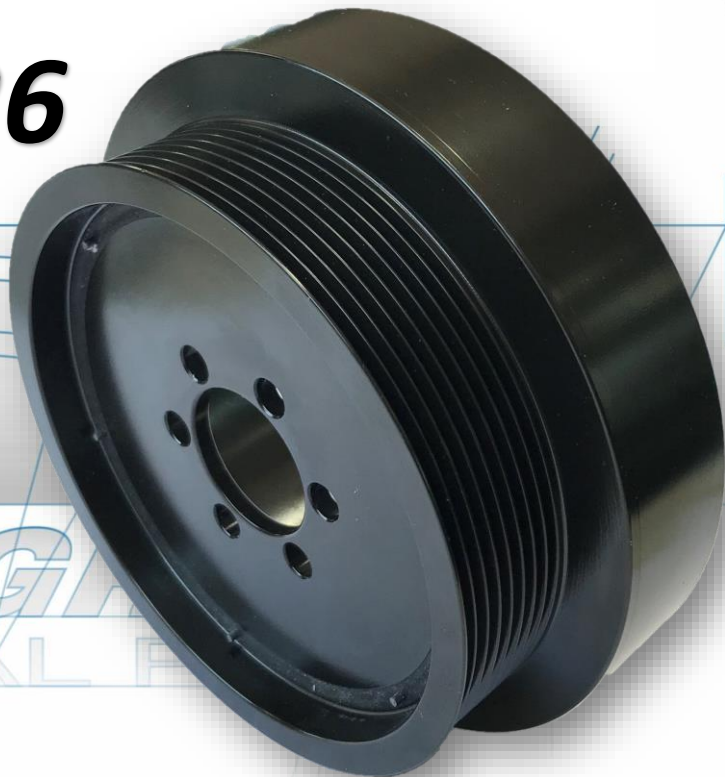






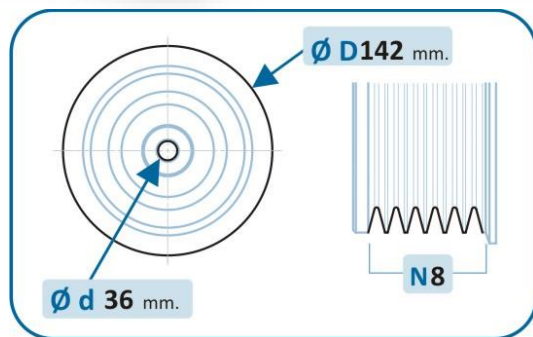
***Novedad / New Product / Nouveauté /  
Novità / Novidade / Nowość / новинка***

**17-1326**



**BMW**

	C.C.			
5er (F10)	2.8i 3.0i	2009-2013	Petrol	N52N / N53AUTO
5er (F11)	2.8i 3.0i	2009-2013	Petrol	N52N / N53AUTO
7er (F01)	3.0i	2007-2015	Petrol	N52N
7er (F02)	3.0i	2007-2015	Petrol	N52N
X3 (F25)	2.8i	2009-2012	Petrol	N52N



**OE Original products equivalent BMW:**  
11 23 7 577 663

